



Engineered Process Controls, LLC

TEL: 425-844-8901

www.engineeredprocess.com

Fax: 425-844-8904

P.O. Box 890

Woodinville, WA 98072



**REFINING & CHEMICAL
OIL & GAS PRODUCTION
PIPELINE & STORAGE**

FOSSIL POWER



WATER & HYDRO-POWER



**PROCESS CONTROL INSTRUMENTATION
LEVEL SYSTEMS FLOW MEASUREMENT
GAS, FIRE & FLAME DETECTION
VALVES, ACTUATORS & CONTROLS
PROCESS ANALYZERS**

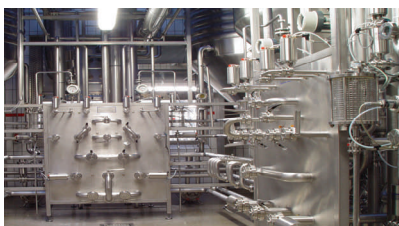
MINING & MINERAL EXTRACTION



PAPER MAKING & FOREST PRODUCTS



SANITARY & BIOPHARM



SEMICONDUCTOR





Process Instrumentation & Controls



LEVEL MEASUREMENT

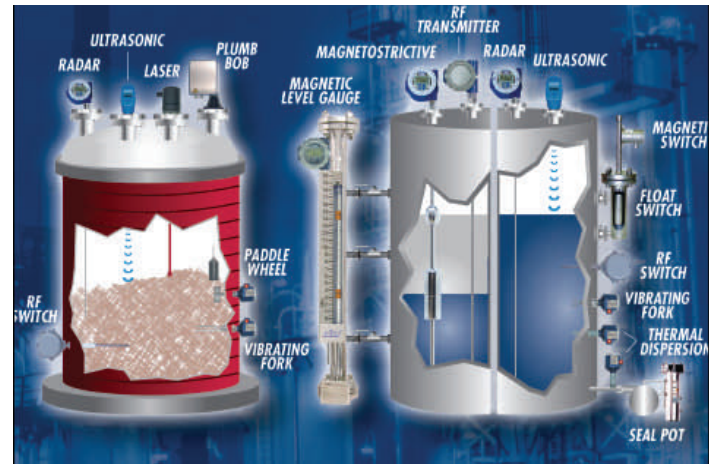
- FMCW RADAR
- TDR RADAR
- INTERFACE LEVEL
- LOOP POWERED

- FLOW METERS
- ULTRASONIC - INLINE
- MASS FLOW METERS
- VARIABLE AREA METER
- MAGNETIC FLOW METERS

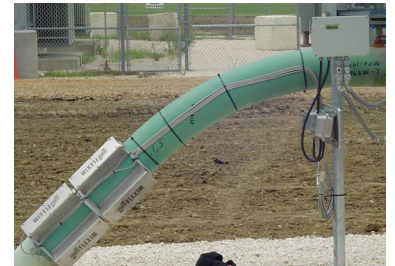


LEVEL MEASUREMENT

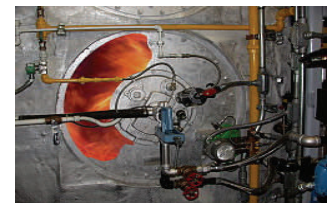
- MAGNETIC LEVEL GAGES
- MAGNETOSTRICTIVE TRANSMITTERS
- LASER LEVEL SYSTEMS
 - CONTINUOUS LEVEL
 - 2 & 3 DIMENSIONAL MEASUREMENTS
- GUIDED WAVE RADAR
- VIBRATING FORK, MECHANICAL SWITCHES
- CAPACITANCE AND RF SWITCH



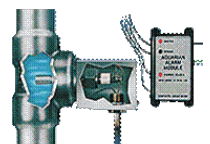
- ULTRASONIC FLOW METERS
- CLAMP-ON FOR LIQUIDS AND GAS
- NO CALIBRATION, ZERO DRIFT
- INTERFACE AND PRODUCT DETECTION
- BTU METER, HIGH TEMPERATURE



- BOILER / BURNER FLAME SCANNERS
- UV / IR SMART SCANNERS
- PILOT IGNITORS
- PYROMETERS



- ELECTRONIC BOILER DRUM LEVEL SYSTEMS
- MECHANICAL GAGE GLASS LEVEL GAGES
- TWIP SYSTEMS, DEARATOR TANK LEVEL





Engineered Process Controls, LLC

TEL: 425-844-8901

www.engineeredprocess.com

P.O. Box 890

Fax: 425-844-8904

Woodinville, WA 98072

Gas Detection, Flame & Fire Detection

Honeywell

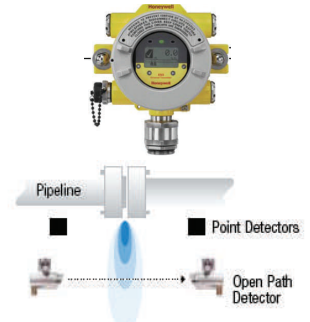
Honeywell Analytics fire and gas detection

sieger

Manning Systems, Inc.



- UNIVERSAL TRANSMITTER: ALL GASSES
- TOXIC & COMBUSTIBLE GAS DETECTORS
- OPEN PATH OPTICAL DETECTORS
- INFRARED LEL DETECTORS
- CONTROLLERS & SYSTEMS
- AMMONIA & REFRIGERATION



Omniguard®

- MODEL 760 IR⁵ MULTI-SPECTRUM FLAME DETECTOR.
- MODEL 860 UV/IR MULTI-SPECTRUM & MODEL 660 UV
- ULTRA-HIGH SPEED FLAME DETECTORS



Process Analyzers

K-PATENTS

PROCESS INSTRUMENTS

- DIGITAL CONCENTRATION ANALYZER
- INLINE REMOVABLE, ZERO DRIFT
- 0.1% ACCURACY BY WEIGHT



TELEDYNE INSTRUMENTS

Analytical Instruments
A Teledyne Technologies Company

- TRACE, PERCENT, AND PURITY ANALYZERS IN GAS & FLUIDS.
- ELECTROCHEMICAL, THERMAL CONDUCTIVITY, FID, TDLAS

Thermo

SCIENTIFIC

- SOLA II SULFUR ANALYZER, CALORIMETERS (WOBBE INDEX AND SPECIFIC GRAVITY)
- MASS SPECTROMETERS: ULTRA HIGH PURITY GASSES, SPECIATION

I/O & Wireless Networks

MTL

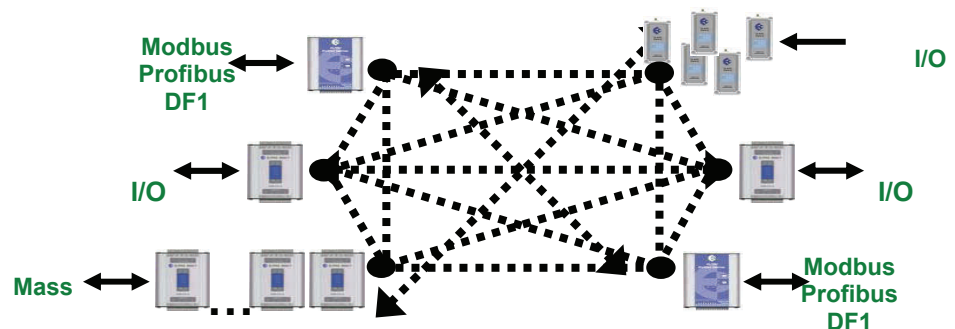
Instruments

- INDUSTRIAL NETWORK SECURITY: TOLFINO
- FIELDBUS POWER SUPPLIES, WIRING COMPONENTS, FIELD DEVICES
- SURGE PROTECTION: POWER, DATA, SIGNAL AND FIELDBUS PROTECTION
- INTRINSIC SAFETY: BARRIERS, ISOLATORS, I/O, TERMINAL BLOCKS
- INDUSTRIAL ETHERNET: RUGGEDISED, IS, SECURITY PRODUCTS

ELPRO

Technologies

- WIRELESS I/O, DISCRETE, ANALOG, DIGITAL
- WIRELESS GATEWAYS: MODBUS, PROFIBUS, ETHERNET I/P
- WIRELESS LEVEL, FLOW, GAS DETECTION, TEMPERATURE
- BATTERY & SOLAR POWERED SYSTEMS





Valves, Regulators and Controls



- METAL SEATED BUTTERFLY VALVES
- CHECK VALVES & NON-RETURN VALVES
- EXTRACTION CHECK VALVES
- COMPLETE ACTUATION PACKAGES



- CAM-TITE & CAM-LINE BALL VALVES,
- FABRI KNIFE GATE VALVES, SLURRY VALVES
- SKOTCH TRIFECTA VALVES DOUBLE BLOCK & BLEED
- DIA-FLO DIAPHRAGM VALVES



- STEAM CONDITIONING / TURBINE BYPASS VALVES, PUMP PROTECTION VALVES.
- DESUPERHEATERS: MECHANICAL & STEAM ATOMIZED, INSERTION & INLINE
- FEED WATER CONTROL VALVES, COMBINED STARTUP & MAIN FEEDWATER REG.



- METAL SEATED BALL VALVES , ZERO LEAKAGE
- SEVERE ABRASIVES, HIGH TEMP / PRESSURE
- CUSTOM END CONNECTIONS,
- POWER /STEAM : VENT & DRAIN, ISOLATION,

Heat Tracing Systems



- ELECTRIC SNOW MELTING AND FREEZE PROTECTION
- COMPLETE CONTROL SYSTEMS AND CABLE/MAT TYPES
- INSTALLATION IN CONCRETE, ASPHALT AND TILED SURFACES

Leak Detection Systems

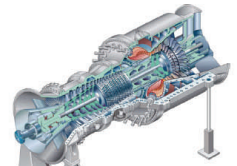


- WATER, HYDROCARBONS, AND CHEMICAL LEAK DETECTION SYSTEMS
- INDUSTRIAL & COMMERCIAL APPLICATIONS: BOILERS, TANKS, COMPUTER ROOMS
- DOUBLE CONTAINMENT PIPE AND DATA CENTER APPLICATIONS

Vibro-Meter

Sensor systems for turbomachinery

- ACCELEROMETERS: STANDARD 120C - 700C
- DYNAMIC PRESSURE SENSORS
- PROXIMITY PROBES, VELOCITY SENSORS
- MACHINE MONITORS



Drives & Soft Starts



- VARIABLE FREQUENCY DRIVES
- LOW HARMONICS, FRACTIONAL - 600 HP.
- DC DRIVES, MOTOR SOFT STARTS

